

L O N D O N W A L L

Serenity Two Tone Groove



Serenity Two Tone Groove range is a sound absorbing wall panel designed to control echo and reverberation which creates a more comfortable acoustic environment, while adding vibrancy to interior spaces.

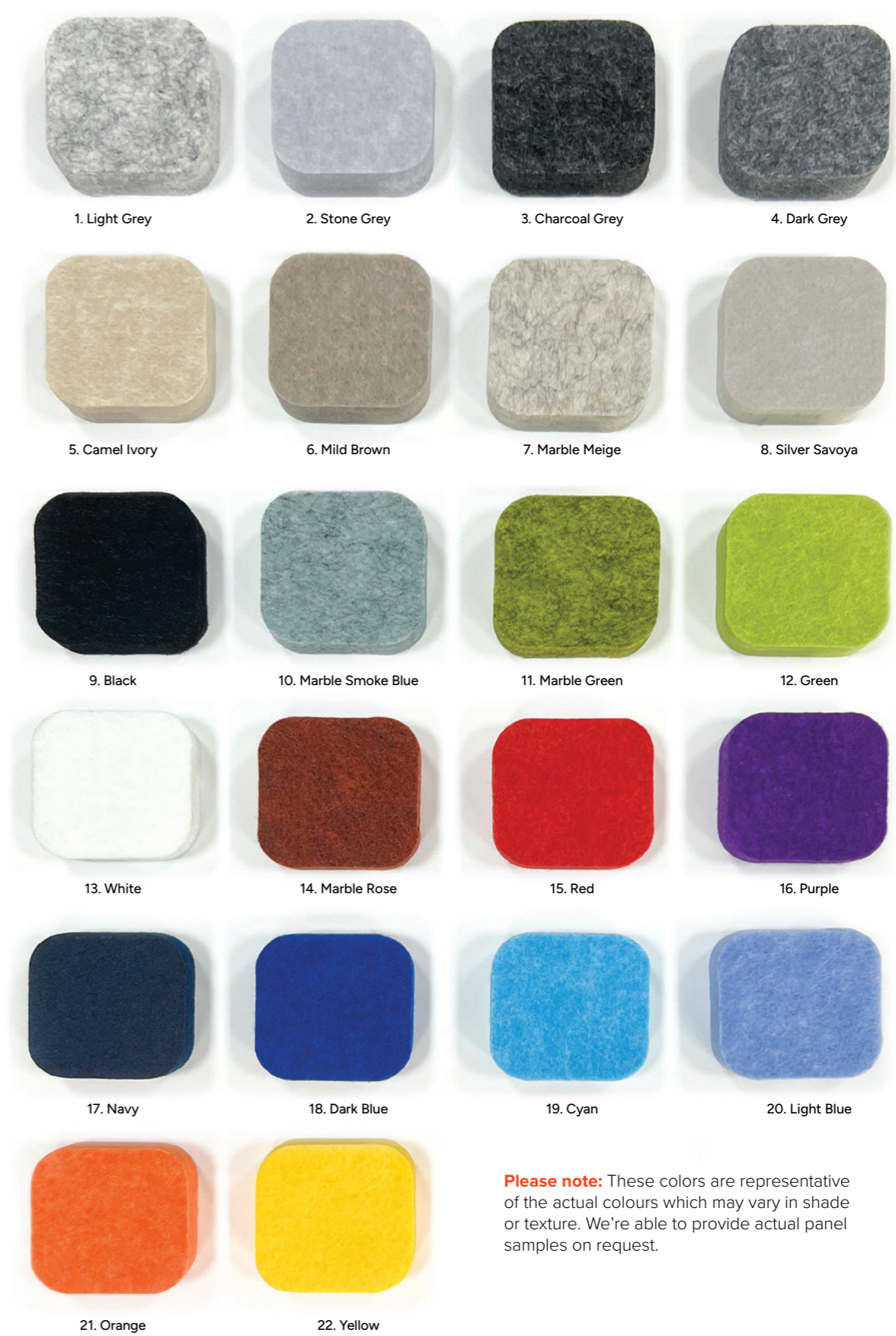
Choose from one of our 9 standard panel designs, or request something unique with the help of our dedicated Design Team. Custom panel sizes are also available, up to a maximum of 2,400mm x 1,200mm, with over 20 base colours and over 15 fabric colours to choose from.

Features

Core Material: Compressed Polyester
Acoustic Performance Sound: Absorption Class: 12mm = NRC 0.95
Weight: 4.5kg/m²
Fire: Panel core has been tested to EN 13501-1:2007+A1:2009 Fire classification of construction products and building elements—Part 1: Classification using data from reaction to fire tests, Class B.



PET Colours

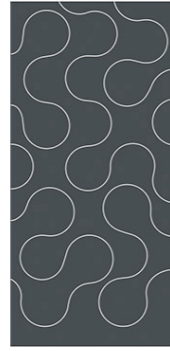


Please note: These colors are representative of the actual colours which may vary in shade or texture. We're able to provide actual panel samples on request.

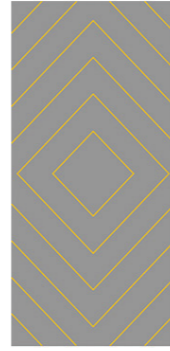
Designs



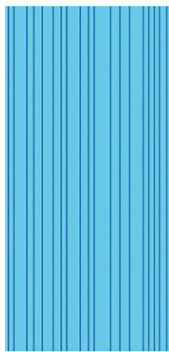
Peanut



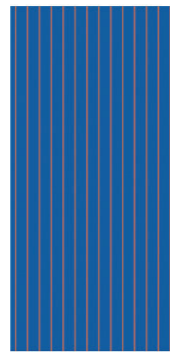
Lava



Zoom



Tall



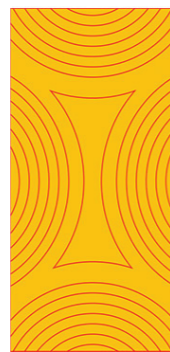
Lanky



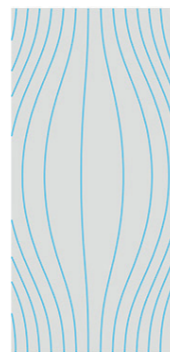
Tilt



Moderate

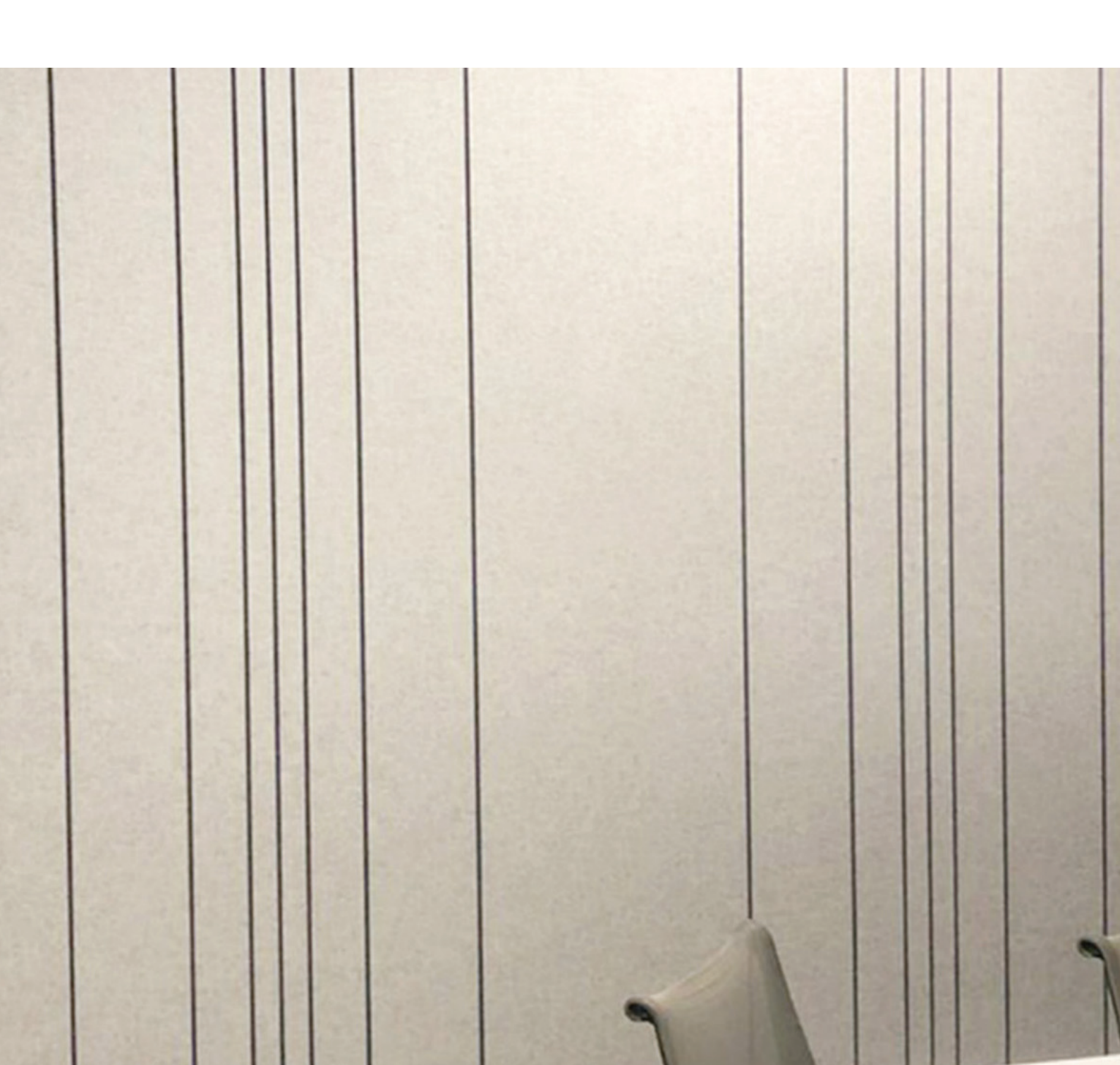


Navigation



Bubble





LONDONWALL

www.londonwall.co.uk
info@londonwall.co.uk
020 8391 8750

London Wall Design Ltd
63 Barwell Business Park
Chessington
KT9 2NY